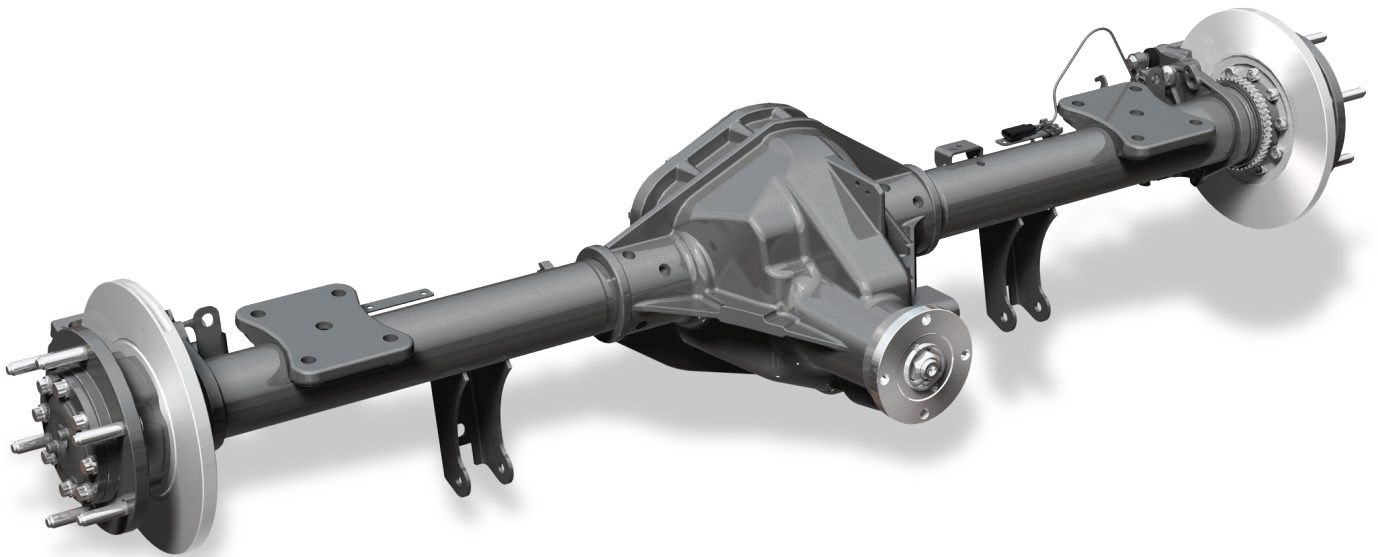




SPICER[®]
Drivetrain Systems

| Beam Axles



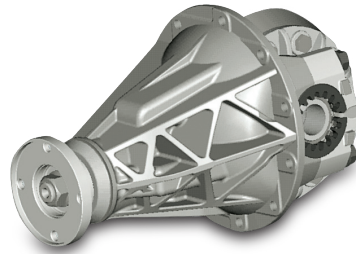
Flexibility for a Full Range of Light-Vehicle Applications

Dana's extensive line of beam axles offers improved efficiency and gear power density in sport utility vehicles, pickups, and light-commercial vehicles.

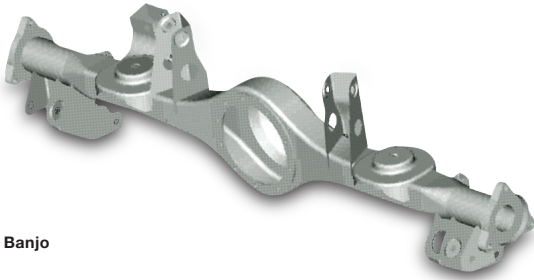
Dana's beam-style axles are lightweight for improved fuel economy and ride, and reduce noise, vibration, and harshness (NVH) in rear-wheel and all-wheel-drive vehicles. Axle styles include banjo and Salisbury designs, which can be tailored to each customer's unique specifications.



Hypoid Gears and Differential Case



Aluminum and Iron Drive Heads



Banjo



Salisbury

Design Features

- Advanced hypoid gear technology uses smaller offsets
- Increased contact ratios
- Large bore bearings
- Differential options include open, limited slip, and locking differentials using net-formed gears
- Full-float steer drives, semi-float, and full-float rears
- Application range extending up to 19,000 N m is suitable for the global pickup, large sport utility vehicle, and light-commercial vehicle markets
- Industry first – Lightweight aluminum center section options for higher capacity applications

Benefits

- Improved gear power density for smaller axles
- Lightweight designs for improved fuel economy, ride, and increased payload
- Improved strength and gear durability for longer life
- Improved efficiency
- Lower NVH

Dana.com/light-vehicles

Application Policy

Capacity ratings, features, and specifications vary depending upon the model and type of service. Application approvals must be obtained from Dana; contact your representative for application approval. We reserve the right to change or modify our product specifications, configurations, or dimensions at any time without notice.



SPICER®

Drivetrain Systems