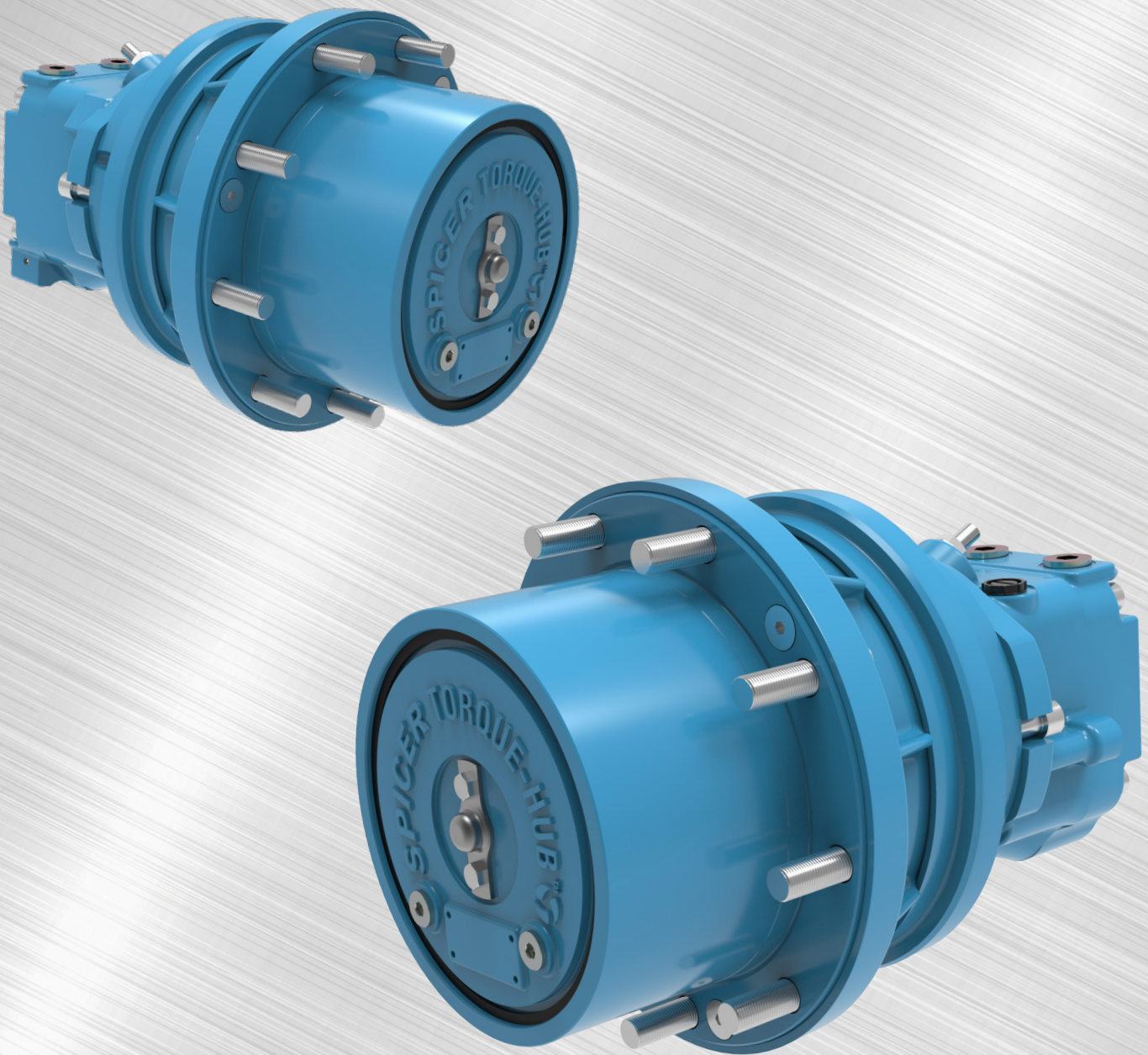




SPICER[®]
Torque-Hub[®]

Spicer[®] Torque-Hub[®]

H Series Wheel Drive



*Spicer[®] Torque-Hub[®] H Series specifically designed for today's hydraulically driven **Mobile Elevated Work Platforms.***

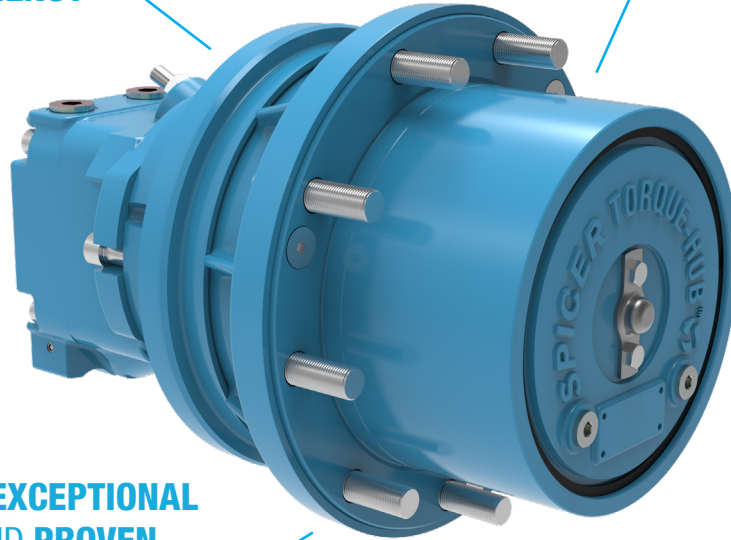
H Series

Spicer® Torque-Hub® H Series Wheel Drive

For more than 40 years, Dana has been the authority providing propulsion solutions for Mobile Elevated Work Platforms (MEWPs). Industry leaders worldwide rely on Dana to solve their challenges drawing upon Dana's extensive product offering and engineering expertise.

**ENGINEERED FOR
BEST-IN-CLASS EFFICIENCY**

**TAILORED AND COMPACT
PACKAGE DESIGN**

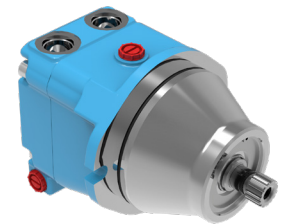


**DESIGNED TO DELIVER EXCEPTIONAL
MANEUVERABILITY AND PROVEN
ROBUSTNESS TO THE FINAL DRIVE**

Recommended motor: Brevini® B5VR

Additional Features and Benefits

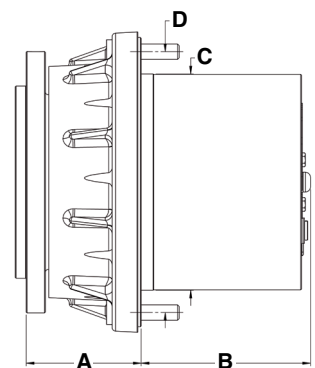
- 1 Product range specifically designed for modern high-efficiency MEWPs
- Torque ratings from 7.000 Nm to 18.000 Nm
- Low maintenance requirements and easy to service
- Sealing system, hub and spindle designed for severe environmental conditions
- Suitable for hydraulic and electric vehicles, with Dana's hydraulic and electric motors



	7H	8H	13H	18H
Parking Brake	▲	▲	▲	▲
Disengage	▲	▲	▲	▲
Cartridge hydraulic motors Connection	▲	▲	▲	▲

▲ - Solution available

	7H	8H	13H	18H
A - Flange to Flange mm [in]	105 [4,13]	106 [4,17]	105 [4,13]	115 [4,52]
B - Hub Length mm [in]	121 [4,76]	110 [4,33]	180 [7,08]	203 [7,99]
C - Wheel Pilot Diameter mm [in]	200 [4,87]	200 [7,87]	280 [11,02]	280 [11,02]
D - Wheel Bolt Circle Diameter mm [in]	241.3 [9,5]	241.3 [9,5]	335 [13,19]	335 [13,19]



	7H	8H	13H	18H
Output Torque Rating kNm [lbf ft]	7 [5,163]	8 [5,900]	12.4 [9,146]	18 [13,276]
Ratio Range	19-57	25.5 – 55.2	59-87	68.5 - 111.9
Motor Mount	SAE B Cartridge Motor	Cartridge Motor	SAE B Cartridge Motor	Cartridge Motor

Dana.com/oh/contact

Application Policy

Capacity ratings, features, and specifications vary depending upon the model and type of service. Application approvals must be obtained from Dana; contact your representative for application approval. We reserve the right to change or modify our product specifications, configurations, or dimensions at any time without notice.



SPICER®

Torque-Hub®